



WE DELIVER QUALITY PRODUCTS AT AFFORDABLE RATES

At Mishk Overseas, we are dedicated to connecting the world through the exportation of high-quality products. With years of experience in the industry, we have established ourselves as a trusted and reliable partner for businesses seeking to expand their global reach. Our company specializes in manufacturing, sourcing and exporting a diverse range of products, ranging from agricultural produce to manufactured goods.

At Mishk Overseas, customer satisfaction is our top priority. We strive to exceed expectations by providing exceptional service, timely deliveries, and competitive pricing. Our team of experienced professionals is committed to understanding our clients' unique needs and delivering tailored solutions to meet them.

YOUR GATEWAY TO GLOBAL TRADE EXCELLENCE

The whole initiative is to deliver high-quality products at the best price. All our product range are properly packaged, and delivered to the customers on time. The team is geared towards providing a smooth experience whenever you think of purchasing from us. Our hard work and dedication is for ensuring that you forge a relationship with us, which will stay strong for years to come.

MISHK OVERSEAS

*Exporting
Necessities*



CONTACT US

+91 70039-24659
+91 74394-71885

www.mishkoverseas.com

FRESH GINGER: SPICE WORLD



Ginger is an underground rhizome which has a pleasant aroma and its spicy in taste. India is the world's largest ginger producer and this is the reason behind why It is impossible to find Indian dishes without ginger. Since Ginger is a seasonal product it may not be available round the year.



NUTRITIONAL VALUE

Serving size 100 g		DV
Calories	80 kcal	4%
Total Carbohydrate	17.8 g	6%
Dietary Fiber	2 g	8%
Sugars	1.7 g	
Total Fat	0.7 g	1%
Saturated Fat	0.2 g	1%
Protein	1.8 g	4%
Vitamin C	5 mg	8%
Vitamin E	0.3 mg	1%
Niacin	0.7 mg	4%
Vitamin B6	0.2 mg	8%
Folate	11 µg	3%
Choline	28.8 mg	
Iron	0.6 mg	3%
Magnesium	43 mg	11%
Phosphorus	34 mg	3%
Potassium	415 mg	12%
Zinc	0.3 gm	2%
Copper	0.2 mg	11%
Manganese	0.2 mg	11%



PRODUCT SPECIFICATION

Fresh ginger

Size: 100-500 gram up

Colour : yellow, brown

Taste: acetic, sweet and hot

Fibre - Very Less

Oil content : 1% MIN

Features: clean, fat root, shine.

Packaging -

As per buyers' requirement

Payment Terms -

100% Advance TT; 30% Advance

TT + 70% Irrevocable L/c At

Sight Against B/L

DRY GINGER: SPICE WORLD



Dried ginger is different from the fresh ginger with respect to its moisture. Dried ginger can be crushed and can be used for gravies, curries, stews etc., . India is the world's largest ginger producer and this is the reason behind why it is impossible to find Indian dishes without ginger.



NUTRITIONAL VALUE

(Per 100 gm)

Protein - 2.3

Fat - 0.9

Minerals - 1.2

Dietary Fibre - 2.4

Carbohydrates - 12.3

Energy - 67

Calcium - 20

Phosphorus - 60

Iron -3.5



PRODUCT SPECIFICATION

**Parts used Rhizomes
Grade- A**

**Color and appearance
- Yellowish Brown**

**Organoleptic characters
- Characteristic taste & aroma**

**Physic-Chemical Analysis
Extraneous matter (% w/w) < 1
Moisture (% w/w) max 5
Total ash (% w/w) max 6**

**Packaging -
As per buyers' requirement**

**Payment Terms -
100% Advance TT; 30% Advance
TT + 70% Irrevocable L/c At
Sight Against B/L**





TEA- TASTE THE SERENITY



Indian tea stands out globally for its rich flavor, diverse varieties, and unparalleled quality, captivating tea enthusiasts, quality standards, extensive production expertise, and a legacy of tea cultivation, Indian tea remains unparalleled in its quality and popularity on the global stage.



NUTRITIONAL VALUE

Nutrition Facts	
Serving Size 1 tbsp, whole 6g (6 g)	
Amount Per Serving	
Calories 22	Calories from Fat 9
% Daily Value*	
Total Fat 1g	2%
Saturated Fat 0g	0%
Trans Fat	
Cholesterol 0mg	0%
Sodium 1mg	0%
Total Carbohydrate 3g	1%
Dietary Fiber 1g	4%
Sugars	
Protein 1g	
Vitamin A 0%	Vitamin C 2%
Calcium 4%	Iron 13%



PRODUCT SPECIFICATION

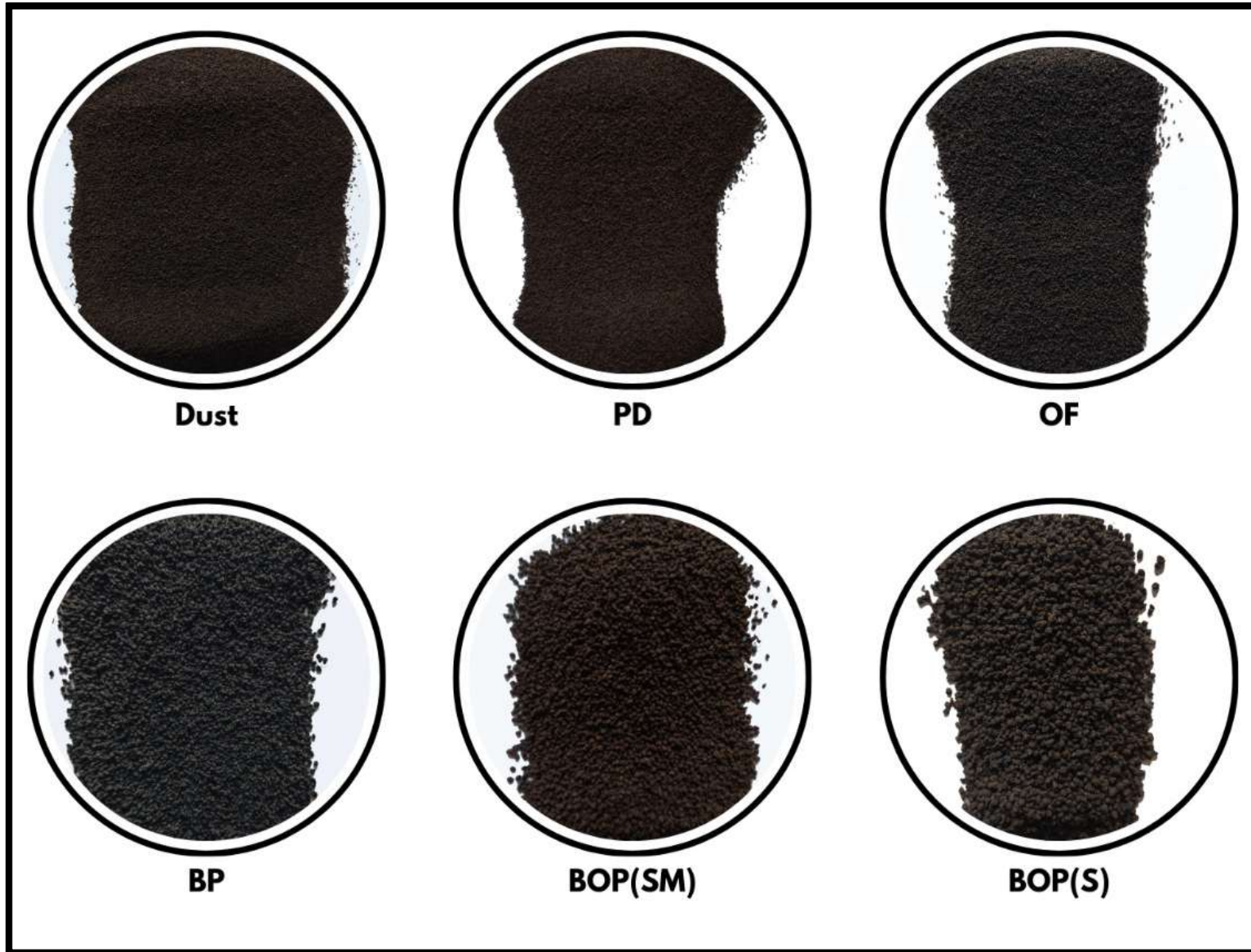
- **Origin:** Assam, Darjeeling, Nilgiri, and Dooars. Each region imparts unique characteristics to the tea, influenced by factors such as climate, altitude, and soil.
- **Grade:** Common grades include whole leaf (FTGFOP - Finest Tippy Golden Flowery Orange Pekoe), broken leaf (BOP - Broken Orange Pekoe), fannings, and dust.
- **Aroma:** Indian black teas often exhibit a complex aroma profile, with notes of malt, honey, floral, fruity, or spicy undertones.
- **Flavor:** The flavor profile can vary from smooth and sweet to robust and astringent, depending on factors such as the tea estate, elevation, and processing.

Packaging -

As per buyers' requirement

Payment Terms -

100% Advance TT; 30% Advance TT + 70% Irrevocable L/c At Sight Against B/L





FRESH CHILLI: SPICE WORLD



The G4 green chilli is the fruit of plants from the genus *Capsicum*, members of the nightshade family, *Solanaceae*. The substances that give chilli peppers their intensity when ingested or applied topically are capsaicin and several related chemicals, collectively called capsaicinoids.



NUTRITIONAL VALUE

Nutritional value per 100 g (3.5 oz)

Energy - 166 kJ (40 kcal)

Carbohydrates - 8.8 g

Sugars - 5.3 g : Dietary fiber - 1.5 g

Fat - 0.4 g : Protein - 1.9 g

Vitamin A equiv - 48 µg

beta-Carotene -534 µg

Vitamin B6 -0.51 mg

Vitamin C - 144 mg

Iron - 1 mg

Magnesium - 23 mg

Potassium - 322 mg

Water- 88 g

Capsaicin -0.01g – 6 g



PRODUCT SPECIFICATION

Variety – G4 Chilli

Grade A

Color – Green

Storage Temp – 4 – 8 c

Optimum Relative Humidity

– 90% to 95%

Packaging -

As per buyers' requirement

Payment Terms -

100% Advance TT; 30% Advance

TT + 70% Irrevocable L/c At

Sight Against B/L



MAKHANA : FOX NUT



Indulge in the wholesome goodness of our premium Indian Makhana, a delectable and nutritious snack straight from the heart of traditional Indian cuisine. Handpicked and cultivated in natural water bodies, our Makhana is rich in protein, fibre, and essential minerals. This gluten-free delight is not just a treat for your taste buds but also a guilt-free choice for health-conscious snack lovers.



NUTRITIONAL VALUE

Nutrition Facts	
Serving size	(100g)
Amount Per Serving	
Calories	350
	% Daily Value*
Total Fat 0g	0%
Saturated Fat 0g	0%
Trans Fat 0g	
Cholesterol 0mg	0%
Sodium 0mg	0%
Total Carbohydrate 77g	28%
Dietary Fiber 8g	29%
Total Sugars 0g	
Includes 0g Added Sugars	0%
Protein 10g	20%
Vitamin D 0mcg	0%
Calcium 60mg	4%
Iron 1.4mg	8%
Potassium 500mg	10%



PRODUCT SPECIFICATION

Seed Characteristics

Colour of Seed Coat - Deep Black

Seed Shape - Spherical

Weight for 100 Seed (g) - 92-98

Diameter of Seed (mm)- 9.5-10.2

Quality Characteristics of popped Makhana (Lawa)

Shape Oblate Size - 2-2.5 cm

Colour Sparkly - White

Packaging -

As per buyers' requirement

Payment Terms -

100% Advance TT; 30% Advance TT + 70% Irrevocable L/c At Sight Against B/L



FROZEN-CHICKEN/PAWS



Frozen Chicken is a state of chicken meat that has been preserved by freezing, usually at a temperature of 0°F or lower, to retain its freshness and shelf life. It is commonly sold in grocery stores and can be defrosted and cooked as needed for various dishes and meals.



NUTRITIONAL VALUE

Nutrition Facts	
Serving size	(100g)
Amount Per Serving	
Calories	200
% Daily Value*	
Total Fat 7g	9%
Saturated Fat 2g	10%
Trans Fat 0g	
Polyunsaturated Fat 3g	
Monounsaturated Fat 2g	
Cholesterol 90mg	30%
Sodium 80mg	3%
Total Carbohydrate 0g	0%
Dietary Fiber 0g	0%
Total Sugars 0g	
Includes 0g Added Sugars	0%
Protein 26g	52%
Vitamin D 0mcg	0%
Calcium 0mg	0%
Iron 0mg	0%
Potassium 243mg	6%



PRODUCT SPECIFICATION

- Washed and clean.
- No blood.
 - No bad smell.
 - Without yellow skin.
 - No feathers.
 - No bruises.
 - Broken bones: under 3%.
- Moisture content: less than 1%.
- No black pads.
- Drainage: 0 to -5°C for 8 hours.

Packaging -
As per buyers' requirement

Payment Terms -
100% Advance TT; 30% Advance TT + 70% Irrevocable L/c At Sight Against B/L



INSENCE STICKS



Welcome to our world of aromatic delights, where every incense stick is crafted with precision and passion to elevate your senses and transform your space. With a commitment to quality and craftsmanship, we present a diverse range of incense sticks that captivate the senses and soothe the soul.



WHY FROM US?

- **Consistent fragrance** lasting throughout the burning time of the incense stick, which typically ranges from 45 minutes to 60 minutes per stick.
- **Variety:** Our collection boasts over 50 unique fragrances, catering to diverse preferences and tastes.
- **Market Presence:** Our incense sticks are exported to over 30 countries, spanning continents and cultures, testament to their universal appeal and exceptional quality.



PRODUCT SPECIFICATION

- **Traditional Fragrances:** From the soothing aroma of Sandalwood to the uplifting scent of Jasmine, each stick promises an enchanting olfactory experience.
- **Exotic Blends:** Experience the allure of exotic lands with our curated blends of rare herbs, spices, and floral essences. Let the mystical fragrance of Nag Champa transport you to sacred temples or Savor the intoxicating scent of Patchouli for a journey of self-discovery and tranquillity.
- **Aromatherapy Essentials:** Discover the therapeutic benefits of aromatherapy with our specialized incense sticks, infused with essential oils known for their calming and rejuvenating properties.

Packaging -

As per buyers' requirement

Payment Terms -

100% Advance TT; 30% Advance TT + 70% Irrevocable L/c At Sight Against B/L



FLY ASH

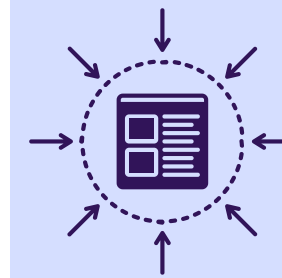


Dry fly ash is a fine powder residue obtained from coal combustion in power plants. This versatile material finds extensive use in various industries, from construction to agriculture. Its lightweight nature and high silica content make it an ideal additive in concrete production, enhancing strength and reducing environmental impact. Additionally, dry fly ash serves as a valuable soil amendment, improving fertility and moisture retention in agricultural applications. With its myriad of benefits, dry fly ash is a sustainable solution for diverse industrial and environmental needs.



WHY FROM US ?

- **Fine Quality** - We make sure the finest of the ash is shipped out
- **Quality Checks** - We make sure 30+ Quality checks are carried out before we ship out the cargo.
- **Affordable Rates** - We make sure that we provide quality at an conventional cost, our prices do not take a toll on our buyers



PRODUCT SPECIFICATION

Moisture content: Optimum moisture content (OMC) value of 11–53%.

Dry density: Maximum dry density value of 1.01–1.78 g/cm³.

Specific gravity: 2.1–3.0.

Specific surface area: 170–1000 m²/kg.

Bulk density: 540–860 kg/m³.

Fineness: Specifications require at least 66% of fly ash to pass the 0.044 mm (No. 325) sieve.

Packaging -

As per buyers' requirement

Payment Terms -

100% Advance TT; 30% Advance TT + 70% Irrevocable L/c At Sight Against B/L



LEATHER BAGS



Leather handbags and wallets exude luxury and practicality, combining exquisite craftsmanship with timeless appeal. Crafted from premium leather, they offer durability and sophistication for everyday use. From stylish totes to sleek wallets, these accessories add a touch of elegance to any outfit, making them essential companions for modern lifestyles.



WHY FROM US ?

- **Fine Quality** - We make sure the finest of our Leather product is shipped out
- **Quality Checks** - We make sure, 30+ Quality checks are carried out before we ship out the cargo.
- **Affordable Rates** - We make sure that we provide quality at an conventional cost, our prices do not take a toll on our buyers.



PRODUCT SPECIFICATION

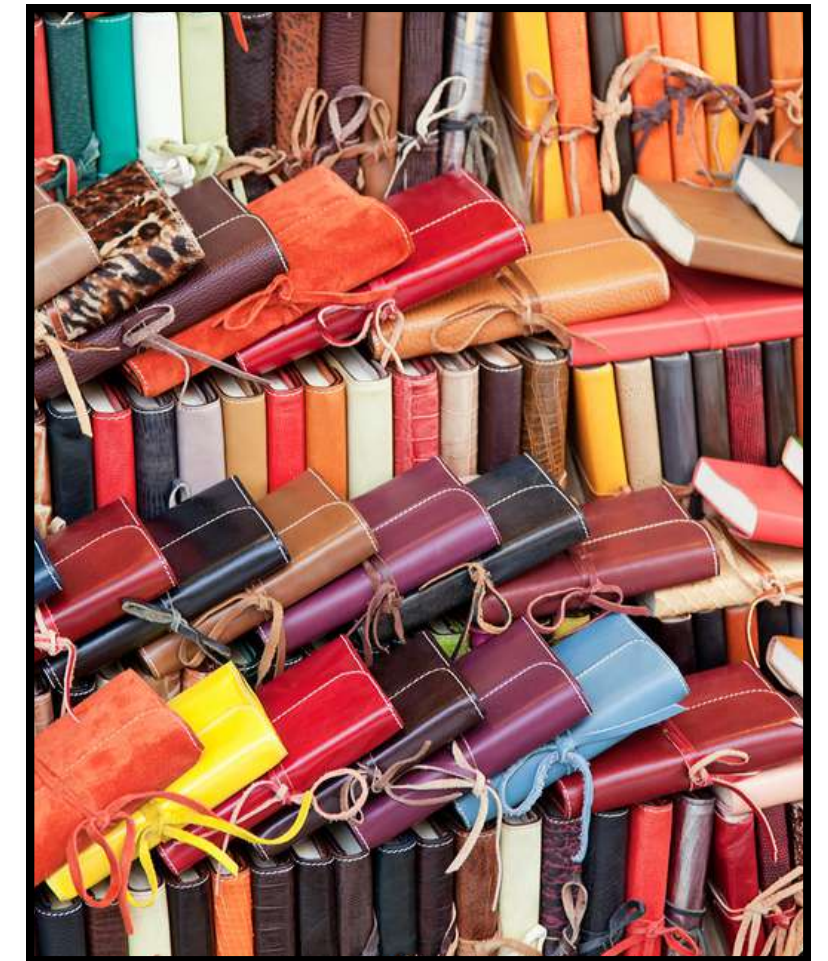
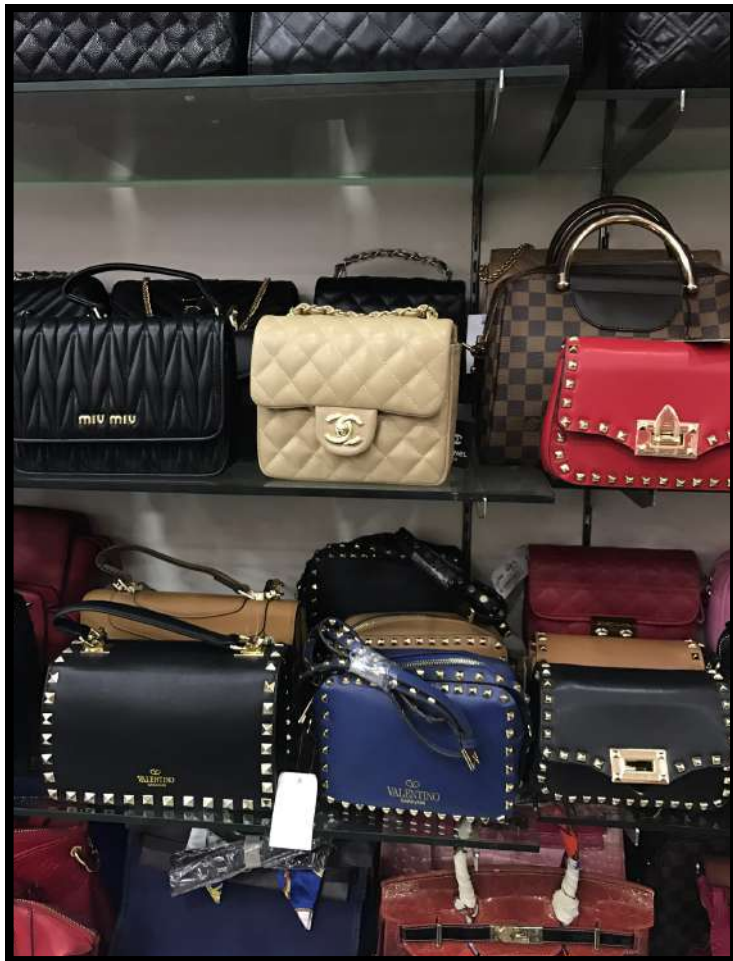
- **3–4 oz:** best for wallets, handbags.
- **Full-grain leather,** sourced from the top layer of the hide, is the strongest and most durable type of leather for wallets. It retains its natural grain and fibers, making it resilient and long-lasting.
- **Our best quality is offered by the aniline finish.**

Packaging -

As per buyers' requirement

Payment Terms -

100% Advance TT; 30% Advance TT
+ 70% Irrevocable L/c At Sight
Against B/L





LEATHER BOOTS



Leather boots are iconic footwear known for their durability and timeless style. leather boots may have seasonal availability due to the sourcing of materials, adding to their desirability and exclusivity. Their unparalleled craftsmanship and versatility make leather boots a staple in wardrobes worldwide.



WHY FROM US ?

- **Fine Quality** - We make sure the finest of our Leather product is shipped out
- **Quality Checks** - We make sure, 30+ Quality checks are carried out before we ship out the cargo.
- **Affordable Rates** - We make sure that we provide quality at an conventional cost, our prices do not take a toll on our buyers



PRODUCT SPECIFICATION

- **5–6 oz: best for boots.**
- **Full-grain leather is the highest quality leather, known for its strength, durability, and breathability. It retains the natural texture and grains from the original outer layer of the animal hide, making it perfect for heavy-duty items like leather boots.**
- **Fiebing's Acrylic Resolene, Fiebing's Leather Sheen, Semi-Aniline Finish**

Packaging -
As per buyers' requirement

Payment Terms -
100% Advance TT; 30% Advance TT + 70% Irrevocable L/c At Sight Against B/L



LEATHER BELTS



LeCrafted from fine leather, belts are quintessential accessories that blend durability with style. Their timeless appeal transcends seasons, offering versatility and sophistication for every occasion. Whether cinching a pair of jeans or accentuating a dress, leather belts are indispensable accessories that complete any ensemble with understated elegance.



WHY FROM US ?

- **Fine Quality** - We make sure the finest of our Leather product is shipped out
- **Quality Checks** - We make sure, 30+ Quality checks are carried out before we ship out the cargo.
- **Affordable Rates** - We make sure that we provide quality at an conventional cost, our prices do not take a toll on our buyers



PRODUCT SPECIFICATION

- **8–10 oz best for belts.**
- **Full grain leather, makes the highest quality and most exquisite belts.**
- **Resolene is a top choice for leather finishes, offering a high shine and excellent protection. many rely on Resolene for its durability and glossy appearance, making it a popular choice for belts.**

Packaging -
As per buyers' requirement

Payment Terms -
100% Advance TT; 30% Advance TT + 70% Irrevocable L/c At Sight Against B/L



FISH - HILSA

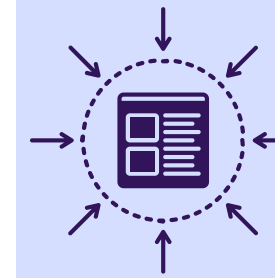


Renowned for its delicate flavour and succulent texture, the Hilsa, also known as the "Silver Queen of Rivers," is a prized catch in South Asian cuisine. Sourced from the purest freshwater rivers, our Hilsa boasts unparalleled freshness and taste. Whether steamed, fried, or cooked in rich gravies, each bite of Hilsa promises a symphony of Flavors that tantalize the taste buds.



NUTRITIONAL VALUE

Nutrients	Value
Calories	309.58
Calories from fat	200.00
Protein	24.72 g/100 g
Total fat	22 g/100 g
Total carbohydrate	3.29 g/100 g
Vitamin C	27.22 mg/100g
Calcium	204.12 mg/100 g
Iron	2.38 mg/100 g



PRODUCT SPECIFICATION

- **Premium Quality:** We prioritize quality above all else, ensuring that every fish in our collection meets the highest standards of freshness and taste.
- **Sustainable Sourcing:** Committed to environmental responsibility, we partner with responsible fisheries to ensure sustainable sourcing practices.
- **Expert Handling:** From procurement to packaging, our team of experts ensures that each fish is handled with the utmost care to preserve its freshness and flavour.

Packaging -
As per buyers' requirement

Payment Terms -
100% Advance TT; 30% Advance TT +
70% Irrevocable L/c At Sight Against
B/L

FISH - CATFISH



Experience the versatility of Catfish, a culinary gem cherished by chefs and food enthusiasts alike. With its firm flesh and mild flavour, Catfish lends itself perfectly to a myriad of cooking techniques. Whether grilled to perfection, pan-seared with aromatic herbs, or simmered in Savory stews, our premium Catfish elevates every dish with its rich taste and delicate texture.



NUTRITIONAL VALUE

A 3.5-OUNCE (100-GRAM) SERVING OF FRESH CATFISH PROVIDES (TRUSTED SOURCE):

CALORIES: 105
FAT: 2.9 GRAMS
PROTEIN: 18 GRAMS
SODIUM: 50 MG
VITAMIN B12: 121% OF THE DAILY VALUE (DV)
SELENIUM: 26% OF THE DV
PHOSPHORUS: 24% OF THE DV
THIAMINE: 15% OF THE DV
POTASSIUM: 19% OF THE DV
CHOLESTEROL: 24% OF THE DV
OMEGA-3 FATTY ACIDS: 237 MG
OMEGA-6 FATTY ACIDS: 337 MG



PRODUCT SPECIFICATION

- **Premium Quality:** We prioritize quality above all else, ensuring that every fish in our collection meets the highest standards of freshness and taste.
- **Sustainable Sourcing:** Committed to environmental responsibility, we partner with responsible fisheries to ensure sustainable sourcing practices.
- **Expert Handling:** From procurement to packaging, our team of experts ensures that each fish is handled with the utmost care to preserve its freshness and flavour.

Packaging -
As per buyers' requirement

Payment Terms -
100% Advance TT; 30% Advance TT + 70% Irrevocable L/c At Sight Against B/L

FISH - CATLA



Indulge in the sublime taste of Catla, revered for its firm flesh and sweet, mild flavour. As a staple in traditional South Asian cuisine, Catla shines in a variety of dishes, from simple curries to elaborate feasts. Sourced from pristine freshwater habitats, our Catla promises unmatched freshness and quality, ensuring every meal is a memorable culinary experience.



NUTRITIONAL VALUE

ENERGY -111 KCAL
MOISTURE -74G
PROTEIN -19G
FAT - 2G
MINERAL - 1G
FIBRE - 0G
CARBOHYDRATES - 3G
CALCIUM - 530MG
PHOSPHORUS - 235MG
IRON - 1MG
ZINC - 1.35MG
VITAMIN D - 102IU
VITAMIN E - 1.21MCG



PRODUCT SPECIFICATION

- **Premium Quality:** We prioritize quality above all else, ensuring that every fish in our collection meets the highest standards of freshness and taste.
- **Sustainable Sourcing:** Committed to environmental responsibility, we partner with responsible fisheries to ensure sustainable sourcing practices.
- **Expert Handling:** From procurement to packaging, our team of experts ensures that each fish is handled with the utmost care to preserve its freshness and flavour.

Packaging -
As per buyers' requirement

Payment Terms -
100% Advance TT; 30% Advance
TT + 70% Irrevocable L/c At
Sight Against B/L

FISH - BHETKI



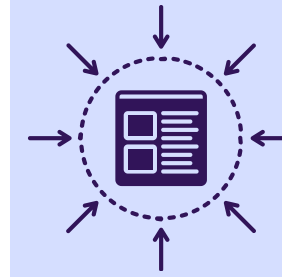
Indulge in the succulent flesh and delicate flavour of Bhetki, also known as Barramundi. Renowned for its mild, buttery taste and tender texture, Bhetki is a favourite among seafood lovers worldwide. Whether grilled, baked, or pan-seared, its versatility shines through, making it a perfect choice for various culinary creations.



NUTRITIONAL VALUE

NUTRITIONAL FACTS (approx values)	
Values* per 100 g serving	
CALORIES	81.6
	% Daily Value*
TOTAL FAT 3.6 g	5.5%
TRANS FAT 0 g	
TOTAL CARBOHYDRATE 8 g	3%
PROTEIN 4.5 g	9%
SODIUM 183 mg	7%
POTASSIUM 240 mg	2.4%
VITAMIN A	9%
IRON	10%
CALCIUM	42%

*Per cent Daily Values are based on a 2,000 calorie diet. Your daily values may be higher or lower depending on your calorie needs.



PRODUCT SPECIFICATION

- **Premium Quality:** We prioritize quality above all else, ensuring that every fish in our collection meets the highest standards of freshness and taste.
- **Sustainable Sourcing:** Committed to environmental responsibility, we partner with responsible fisheries to ensure sustainable sourcing practices.
- **Expert Handling:** From procurement to packaging, our team of experts ensures that each fish is handled with the utmost care to preserve its freshness and flavour.

Packaging -
As per buyers' requirement

Payment Terms -
100% Advance TT; 30% Advance TT + 70% Irrevocable L/c At Sight Against B/L



